



## 5 RYDERS TERRACE

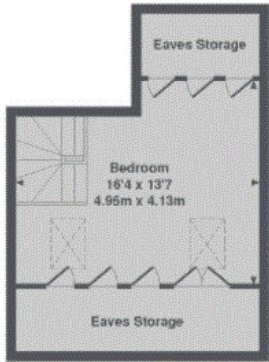
LONDON, NW8 0EE

£3,900 PCM

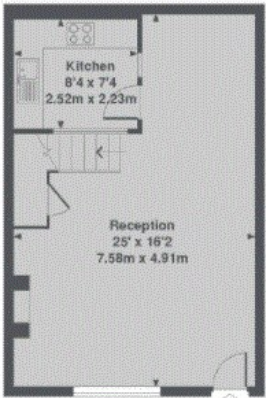
A beautiful, refurbished 2/3 bedroom mews house boasting a striking Stucco Front facade has become available on Ryders Terrace, NW8.

**LONDON**  
**HOMESTEAD**

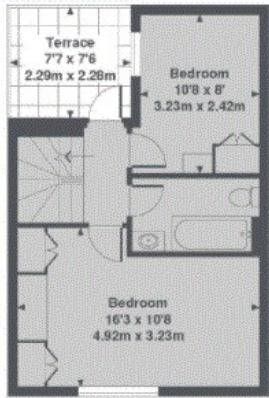
Approximate Gross Internal Area (excluding reduced headroom)  
Ground floor = 409 sq. ft. (38.0 sq. m.)  
First floor = 341 sq. ft. (31.7 sq. m.)  
Second floor = 61 sq. ft. (5.7 sq. m.)  
Reduced headroom = 190 sq. ft. (17.7 sq. m.)  
Total = 1001 sq. ft. (93.1 sq. m.)



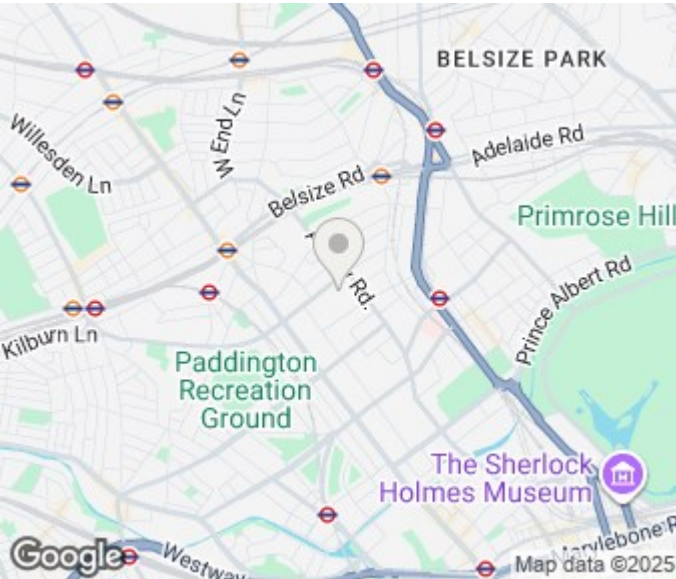
2nd Floor



Ground Floor



1st Floor



Energy Efficiency Rating		
	Current	Potential
Very energy efficient - lower running costs		
(92 plus) <b>A</b>		
(81-91) <b>B</b>		
(69-80) <b>C</b>		
(55-68) <b>D</b>		
(39-54) <b>E</b>		
(21-38) <b>F</b>		
(1-20) <b>G</b>		
Not energy efficient - higher running costs		
<b>England &amp; Wales</b>	EU Directive 2002/91/EC	

Agents Note: Whilst every care has been taken to prepare these particulars, they are for guidance purposes only. All measurements are approximate and are for general guidance purposes only and whilst every care has been taken to ensure their accuracy, they should not be relied upon and potential buyers/tenants are advised to recheck the measurements

Hendon  
Highview House  
6 Queens Road  
Greater London  
NW4 2TH

02084 571188  
[enquiries@londonhomestead.co.uk](mailto:enquiries@londonhomestead.co.uk)

**LONDON**  
**HOMESTEAD**